

SUMMER 2012



With map in the envelope



GLETSCHERPARK

IMST · PITZTAL · KAUNERTAL



GLETSCHERPARK.COM

Straight path, clear direction.

A little ahead.





Nature to inhale.

Energy to recharge.

Strength to *take with you.*



A mountain world, pure and untouched.

Pastoral summer idyll.





The Glacier Park.

Welcome to the world of the ibex.

Welcome to the world of the ibex.

With the Glacier Park Card summer ticket you have access to a unique natural and cultural landscape far away from mass tourism. The Kaunertal Glacier Road and the cable cars in the regions of Kaunertal, Pitztal and Imst-Gurgltal are highlights that introduce you to the various Alpine elevations between 900 and 3,108 meters above sea level. Experience the diversity of the Tyrolean mountain world over 3, 7 or 10 days including Cultural and Bonus Partners.



The Glacier Park Card.

Your key to the Glacier Park.



3, 7 or 10 days nature experience without compromise

Take advantage of ten cable cars and lifts in the Glacier Park, the Kaunertal Glacier Road, free entry to the facilities of our cultural partners and countless other offers and deals – as often as you like.

PRICES	3 DAYS	7 DAYS	10 DAYS
ADULTS (born 1996 and older)	42.00	61.00	82.00
CHILDREN (born 1997-2005)	21.00	30.00	41.00

VALID: 9 June until 14 October 2012
Lift opening times may vary.

BAMBINI FREE TICKET: Children under 10 years (born 2003-2005) travel free when accompanied by an adult.

**BAMBINI
FREE**

FROM EURO

42.-

PER PERSON
FOR 3 DAYS

Lifts

1 Pitztal Glacier *Austria's highest cable car at 3,440 m*

In summer 2012, construction begins on Austria's highest cable car as well as highest café "Café 3.440". For this reason only the Gletscherexpress (2,840 m) will be open.



5 Fendels/Sattelklause *1,874 m*

The mountain village offers family-friendly hiking trails and an adventure playground at restaurant Sattelklause.



2 Lake Riffelsee *2,232 m*

A picturesque Alpine lake, easily reached with the Riffelsee lift. Starting point for many varied walks suiting all ages.



6 Hochzeiger Lifts *2,370 m*

Our lifts take you up to 2,370 m to the Sechszeiger top station. There awaits a dazzling view of the mountain world.



3 Kaunertal Glacier *3,108 m*

The Karlesjoch lift takes you up to Drei-Länder-Blick (3-country view) with vistas stretching from Switzerland to Italy.



7 Imst Lifts *2,050 m*

Take the double chairlifts to the hiking area at 2,050 m. Special "experience highlight" – a rapid ride on the Alpine Coaster to the bottom station in Hoch-Imst.



4 Kaunertal Glacier Road *1,273 – 2,750 m*

The beautiful Alpine road runs along the edge of the Gepatsch reservoir and climbs the Kaunertal Glacier.



8 Nature Park House *1,560 m*

Free entry to the exhibition "3,000 m VERTIKAL".



1 Pitztal Glacier, 3,440 m



Construction of Austria's highest cable car

Head up to the Pitztal Glacier on the Gletscherexpress where this summer you will find the highest building site in Austria! This is where the new Wildspitzbahn cable car is being built, replacing the Pitz Panorambahn from October 2012. Experience the glacial world in the summer with its unique natural scenery.

If you want to get to the top of Tyrol's highest mountain, the Wildspitze (3,774m), then take the mountaineers' "early-bird" lift.

PITZTAL GLACIER LIFT	ADULTS	CHILDREN	SENIOR CITIZENS
Ascent and descent Gletscherexpress	17.00	10.50	13.50
Prices for single use. Free for holders of the Glacier Park Card!			

Summer operation – from 30.6.2012, daily from 8.30 am until 4.30 pm. **Age groups** – Children born 2006 and younger free, child tariff applies to those born between 2005 - 1997, adult tariff for those born 1996 and older. **Bambini Free Ticket** – Children under 10 years (born from 2003) accompanied by a parent travel free. **Senior citizens** – from age 65 (born 1947). **Disabled** – reductions for guests with disability certificate (disability level min. 60% according to official ID). **Tour groups** with a minimum of 20 paying guests receive a 10% group discount. The group leader must purchase all the tickets together.

CULTURE TIP: Kapelle des weißen Lichts (Chapel of the White Light)

From the top lift station of the Gletscherexpress, a path leads to the sacred treasure of the Ötztal Alps. The white granite of the chapel provides a dramatic contrast to the red cliffs of the Pitztal Glacier.



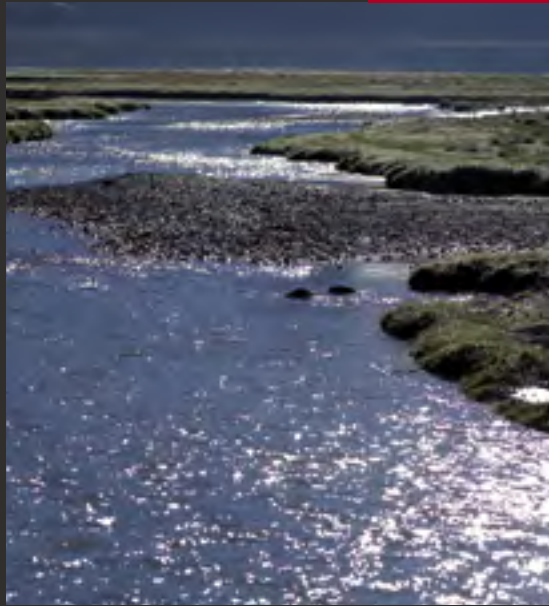
EXPERIENCE TIP: Guided tour into the glacier ice caves

Pitztal mountain guides take you on a free tour to the ice caves every Tuesday and Thursday in July and August. Meet at 10.30 am on the sun terrace of the glacier restaurant "Kristall".



i Nival zone over 3,100 m





An enchanting mountain lake at 2,232 m

The starting point is at Mandarfen, which is situated at 1,682 metres above sea level in the Pitztal; you can also park here. The Riffelseebahn lift transports you effortlessly up to an altitude of 2,300 meters on the comfortable 6-seater gondola cable car. The top station, along with the Sunna Alm restaurant, has a sunny panorama terrace. The building is a state-of-the-art passive house with solar technology and geothermal energy generation. The trail around Lake Riffelsee is suitable for families and senior citizens. The circular hike becomes a true natural experience for children thanks to the detective game “Pitzi’s Discovery Tour”. Instructions for the game are available in the Sunna Alm mountain restaurant.

RIFFELSEE LIFTS	ADULTS	CHILDREN	SENIOR CITIZENS
Ascent and descent	17.00	10.50	13.50
Ascent or descent	13.00	9.50	10.50
Prices for single use. Free for holders of the Glacier Park Card!			

Summer operation – from 16.6. until 7.10.12 and 12.10. until 14.10.2012, daily from 8.30 am - 4.30 pm, lunch break from 12.15 pm - 1 pm. **Age groups** – Children born 2006 and younger free, child tariff applies to those born between 2005 - 1997, adult tariff for those born 1996 and older. **Bambini Free Ticket** – Children under 10 years (born from 2003) accompanied by a parent travel free. **Senior citizens** – from age 65 (born 1947) **Disabled** – reductions for guests with disability certificate (disability level min. 60% according to official ID). **Tour groups** with a minimum of 20 paying guests receive a 10% group discount. The group leader must purchase all the tickets together.

FAMILY TIP: Hiking trail around the lake “Seerunde”


The summer hiking trail around Lake Riffelsee is a delightful experience that is suitable for families (with pushchairs) and senior citizens.

 Length: 2.5 km	 Families: yes	 Huts: 2	 Time: 1 h	 Altitude difference: 100 m
--	---	---	---	--

HIKING TIP: Fuldaer high route

Scenic high-alpine hike with little altitude difference. Departs from the top station of the Riffelsee lift and leads to the Taschachhaus (2,340 m). Surefootedness and good hiking boots required!

 Length: 10 km	 Families: yes	 Huts: 3	 Time: 4 hrs	 Altitude difference: 140 m
---	---	---	---	--

 **Alpine zone 2,100 – 2,800 m**



3 Kaunertal Glacier, 3,108 m



Everlasting views

The Karlesjochbahn lift starts right at the car park at the end of the Glacier Road and takes you up to the lookout point for “3-Länder-Blick” (3-country-view) at 3,108 metres. You are now right on the border between Austria and Italy and have a wonderful view of Italy’s mountains including the Ortler (3,905 m), the Bernina Group in Switzerland (4,069 m) or the Silvretta Group. Free guided tours into the glacial crevasse, a children’s adventure playground in front of the restaurant and a small lake for rafting add to the unique range of activities on offer at the Kaunertal Glacier.

KARLESJOCH LIFT	ADULTS	CHILDREN
Ascent and descent	16.50	10.50
Prices for single use. Free for holders of the Glacier Park Card!		

Lift operation – daily from 9 am - 4 pm. **Restaurant Weißsee** – daily from 8 am - 4.30 pm. **Age groups** – Children born 2006 and younger free, child tariff applies to those born between 2005 - 1997, adult tariff for those born 1996 and older. **Bambini Free Ticket** – Children under 10 years (born from 2003) accompanied by a parent travel free. **Coach tour reductions** – coach drivers and tour group leaders travel free of charge.

VIEWING TIP: Drei-Länder-Blick (three-country view)

Stand with one foot in Austria and the other in Italy and enjoy the mountains of Switzerland, Italy and Austria.

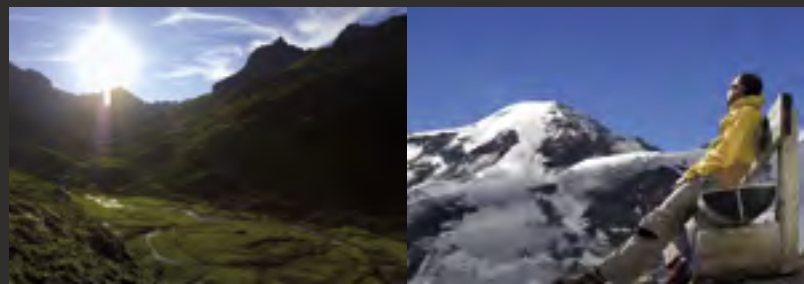


EXPERIENCE TIP: Circular trail through the glacial crevasse

Free guided tours into the glacial crevasse in July, August and September, Mon - Fri. Meet at 11 am on the sun terrace of the restaurant Weißsee, Kaunertal Glacier adventure playground and small lake at the glacier restaurant.



i Subnival zone 2,800 – 3,100 m



4 Glacier Road, 1,273 – 2,750 m



29 stations to the Kaunertal Glacier

The Kaunertal Glacier Road winds its way from the village of Feichten in the Kaunertal (1,273 metres above sea level) right up to the edge of the “perpetual ice” at an altitude of 2,750 metres. In the course of its 26 kilometres, it covers a total of 29 bends and an altitude difference of almost 1,500 metres. You’ll find numerous interesting, clearly marked features right by the side of the road. At the end of the road, the Karlesjochbahn lift takes you up to 3,108 metres above sea level. Detailed information is available in our Glacier Road brochure.

ROAD TOLL	DAY TICKET	14-DAY TICKET
Car/privat mini bus <i>Up to max. 5 people</i>	22.00	28.00
Bus/Taxi <i>per person</i>	6.00	–
Motorbike max. 2 people	12.00	17.00
Walker’s toll**	6.00	12.00
Prices for single use. Free for holders of the Glacier Park Card!		

Age groups – Children born 2006 and younger free, child tariff applies to those born between 2005 -1997, adult tariff for those born 1996 and older. **Bambini Free Ticket** – Children under 10 years (born from 2003) accompanied by a parent travel free. **Coach tour reductions** – coach drivers and tour group leaders travel free of charge. The toll charge is always valid for a return trip. Rental vehicles can only buy day toll tickets. **Ski pass** – the toll for the Glacier Road is included in the price of the ski pass. * Valid from 1.1 until 31.12 of each year.

** In the case of a mixed vehicle (skiers and pedestrians) pedestrians pay the walkers’ toll.

FAMILY TIP: Detective game for children

“On the secret tracks of Kauni the ibex”, fun and adventure for children big and small. Discover the unique natural beauties and characteristics of the Glacier Park in the Kaunertal.



HIKING TIP: Hiking path over the red rocks

Gentle hike beginning right on the Glacier Road with a wonderful view of the glacier tongue of the Gepatschferner.



i Montane zone 900 – 1,600 m, Subalpine zone 1,600 – 2,100 m, Alpine zone 2,100 – 2,800 m





A mountain village in the heart of glacier country

On a high-altitude plateau at the entrance to the Kaunertal valley lies the small village of Fendels. At 1,356 metres above sea level, it's a typical Tyrolean mountain village, which over the centuries has held on to its Tyrolean tradition and architectural style. The valley station for the 4-seater chairlift is situated right in the village and will whisk you up to the Sattelklause in the heart of a hiking paradise.

FENDELS LIFTS	ADULTS	CHILDREN
Single ticket <i>one lift</i>	9.00 / 7.60 *	5.40 / 4.50 *
Single ticket <i>both lifts</i>	11.00 / 10.00 *	6.70 / 6.00 *
Ascent and <i>descent one lift</i>	11.00 / 10.00 *	6.70 / 6.00 *
Ascent and <i>descent both lifts</i>	15.00 / 13.40 *	9.00 / 8.00 *

Prices for single use. Free for holders of the Glacier Park Card!

Summer operation – 27.5 until 21.6. and 13.9. until 7.10.2012: every Thurs and Sun; 23.6. until 9.9.2012, additional 28.5.2012: daily; lift operation 9 am - 12 noon and 1 pm - 4.45 pm. No lift service in the event of bad weather: Info. hotline +43/664/816 17 75. **Age groups** – Children born 2006 and younger free, child tariff applies to those born between 2005 - 1997, adult tariff for those born 1996 and older. **Bambini Free Ticket** – Children under 10 years (born from 2003) accompanied by a parent travel free. **Disabled** – reductions for guests with disability certificate (disability level min. 60% according to official ID), except summer card tariff. * **Summer Card / Guest Card** – Holders of a completed Summer Card or Guest Card for the Landeck district enjoy a discounted rate.

FAMILY TIP: Children's adventure land

Water and adventure playground at restaurant Sattelklause, fun circular trail around the Sattelkopf, free trampoline jumping.



HIKING TIP: Natural wonder "Fallender Bach"

From restaurant Sattelklause over to the Fendler Alm and on to the Stalanzler Alm (no service). Worth a look: "Fallender Bach" waterfall (160 m high).



i Subalpine zone 1,600 – 2,100 m






Simply MORE hiking

Visitors on the Sechszeiger (2,370 m) are treated to spectacular views of the mountain world stretching all the way to the Zugspitze. With the Hochzeiger gondola and the Sechszeiger double chairlift, it's a quick and easy ride up to the perfect starting point for countless wonderful hikes. Enjoy the magnificent mountain scenery and experience "the magic of pine" - pine promotes relaxation and enchants all the senses. Untouched nature and a sparkling green mountain lake can be found in the Riegetal conservation area. The three mountain peaks - Hochzeiger, Gemeindegkopf and Wildgrat - are rewarding mountain destinations for experienced hikers.

HIKING TIP: Alm hike

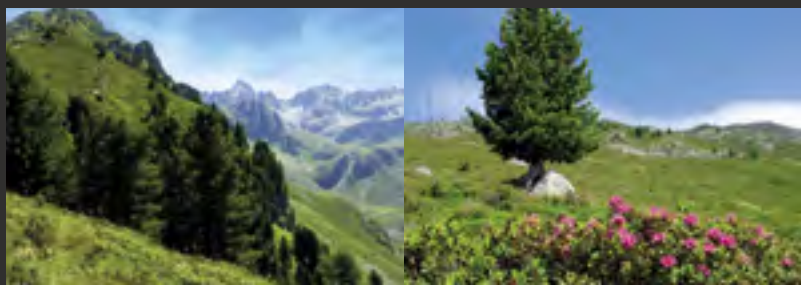
Take the lift up to 2,370 m, hike down to the Kalbenalm, Jerzner Alm, Hochzeigerhaus and Stalterhütte (huts). Take the "Bärensteig" (bear trail) and return to the bottom lift station.

 Length: 7 km
  Families: yes
  Huts: 4
  Time: 2.5 hrs
  Altitude difference: 1,000 m

 **Montane zone** 900 – 1,600 m, **Subalpine zone** 1,600 – 2,100 m, **Alpine zone** 2,100 – 2,800 m

HOCHZEIGER LIFTS	ADULTS	CHILDREN
Ascent <i>gondola</i>	8.50	5.50
Descent <i>gondola</i>	6.00	3.50
Ascent and <i>descent gondola</i>	12.00	6.50
Ascent <i>gondola</i> + <i>double chairlift</i>	12.00	7.50
Ascent and <i>descent gondola</i> + <i>double chairlift</i>	15.50	9.50
Prices for single use. Free for holders of the Glacier Park Card!		

Summer operation gondola – 7.6. until 14.10.2012, daily from 9 am - 5 pm; **double chairlift** – 17.6. until 30.9.2012, daily from 9.10. am until 4.30 pm. Children – born 2006 and younger travel free. **Bambini Free Ticket** – Children born between 2005 - 2003 free when accompanied by a parent. Child tariff – born 2002 - 1997. **Disabled** – guests with a disability certificate (disability level min. 60% according to official ID) receive 25% discount on the adult rate. **Tour groups** – one free ticket for every 10 full-paying guests.



7 Imst Lifts, 2,050 m



A hiking and climbing eldorado

Take the double chairlift via the middle station right up to the Alpjoch at 2,050 m – the ideal starting point for climbing tours. Special “experience highlight” – a rapid ride on the Alpine Coaster Imst, the longest alpine rollercoaster in the world.

IMST LIFTS	ADULTS	YOUTH / SENIOR CITIZENS	CHILDREN	FAMILIES
Ascent <i>first section</i>	7.30	5.90	4.20	18.80
Descent <i>first section</i>	6.00	5.20	3.20	15.20
Ascent and descent <i>first section</i>	12.00	9.60	6.20	30.20
Ascent <i>both sections</i>	12.40	9.60	6.50	31.30
Descent <i>both sections</i>	6.70	5.70	3.50	16.90
Ascent and descent <i>both sections</i>	14.20	11.10	7.10	35.50

Prices for single use. Free for holders of the Glacier Park Card!

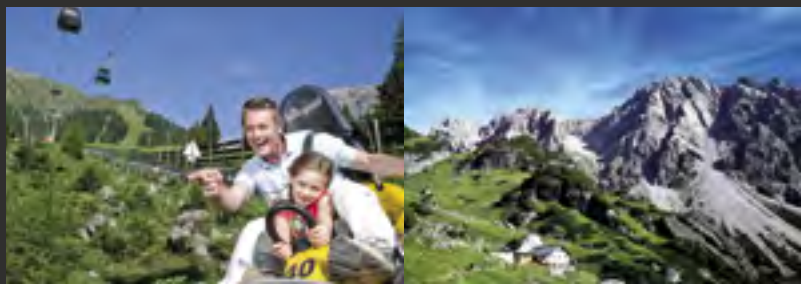
In service 1st section (Untermarkter Alm lift) – 28.4. until 1.5.12: Sat - Tue; 3.5. until 24.6.2012: Thu until Easter Monday; 28.6 until 16.9: daily; 20.9 until 28.10.12: Thurs - Sun; 9 am - 5 pm; In service 2nd section (Alpjoch lift) – 17.6 until 29.6.11: Thurs - Sun; 30.6 until 11.9.11: daily; 15.9 until 9.10.11: Thurs - Sun; 9.15 am – 12 noon and 1 pm - 4.45 pm. **Adults** – born 1990 and earlier; **Youth and Senior citizens** - youth born 1991 and after, senior citizens born 1950 and earlier; **Children** – born 2004 - 1995; **Families** – children born 1991 and after; **Groups** – 10 % discount for groups of 20 people or more, + 1 free ticket for tour group leaders

HIKING TIP: Family hike to the Latschenhütte hut.

This hike is especially for families with children, taking you from the Untermarkter Alm (1,490 m) on the romantic Jägersteig (hunters' trail) to the Latschenhütte (hut) (1,620 m). Return via lush alpine meadows to the start of the Alpine Coaster Imst.

 Length: 3 km
  Families: yes
  Huts: 2
  Time: 1.5 hrs
  Altitude difference: 130 m

i Subalpine zone 1,600 – 2,100 m



8 Nature Park House Kaunergrat, 1,560 m



The information centre for nature and culture

The Nature Park House Kaunergrat at the vantage point “Gachen Blick” – the “crossing” between the two valleys Kaunertal and Pitztal – is an information centre for all visitors interested in nature and culture. Whether on Tyrol’s prettiest sun terrace or on a tour through the exhibition “3,000 m VERTIKAL”, the Nature Park House is the ideal place to learn about the very special features in the Pitztal/Kaunertal nature park. The “Gachenblick” café/restaurant offers a range of delicious regional specialities in a unique setting.

OPENING HOURS

Restaurant “Gachenblick” daily from 10 am until 9 pm
Exhibition “3,000 m VERTIKAL” daily from 10 am until 6 pm

ADMISSION PRICES	ADULTS	CHILDREN	SENIOR CITIZENS
Exhibition “3,000 m VERTIKAL”	4.00	2.00	3.00

Free for holders of the Glacier Park Card!

Group discount with min. 20 people!

Coaches over 7.5 t or 12 m long require a special permit from the Landeck district commission (Bezirkshauptmannschaft) for the drive up to the Nature Park House!

Information: +43/5449/63 04

HIKING TIP: Moor hike

Along the moor nature trail by Piller Moor, you’ll find information on how moors (peat bogs) form, the vegetation and peat cutting.

Length: 2.5 km Families: yes Huts: 1 Time: 1.5 hrs Altitude difference: 150 m

i Montane zone 900 – 1,600 m



Cultural Partners.

The landscape shapes the people.



Our Cultural Partners – a comprehensive insight into the culture and traditions of the Tyrolean Oberland region.

The mountain farmers of Tyrol have preserved their customs until today. In the Glacier Park you will come across interesting cultural exhibitions, a mining village, an old restored mill or perhaps a local Tyrolean, who can tell you all about life in the mountains now and in the past.

K1 Haus der Fasnacht (carnival museum)

This museum uses modern technology to display a variety of ancient traditions.



6460 Imst, Streleweg 6
T +43/664/131 16 40
www.fasnacht.at

K2 Knappenwelt Gurgltal (mining village)

Experience the tough but fascinating life of the miners.



6464 Tarrenz, Gurgltal
T +43/5412/630 23
www.knappenwelt.at

K3 Museum im Ballhaus

This museum illustrates the rich history of Imst in a modern way.



6460 Imst, Ballgasse 1
T +43/5412/649 27
www.imst.tirol.gv.at

K4 Nature Park House Museum

In a multimedia exhibition, visitors are given an insight into the natural features found in the Nature Park.



6521 Fließ, Gachenblick 100
T +43/5449/63 04
www.kaunergrat.at

K5 Serfauser Lauser – Old Mill

“From grain to bread”:
Bread baking every Friday
at 11 am, June - October



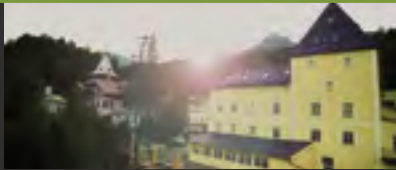
6541 Tösens, Untertösens 1
T +43/664/260 71 80
www.serfauser-lauser.at



Cultural Partners

K6 Starkenberger Beer Experience

Dive into a world of beer and uncover the legends of medieval castle Starkenberg.



Erlebniswelt Schloss Starkenberg,
6464 Tarrenz
T +43/5412/662 01
www.biermythos.at

K7 Fasnachtshaus Nassereith (carnival house)

Visitors to the Fasnachtshaus can admire the colourful costumes, old tradition and huge wooden masks made by great local artists.



6465 Nassereith,
Sachsengasse 81a,
T +43/676/945 98 84
www.schellerlaufen.at

K8 Pine Exhibition Jerzens

The stone pine – “border crosser” with talents, takes visitors into the fascinating world of the stone pine.



Jerzens community centre
6474 Jerzens 220
T +43/5414/873 36
www.jerzens.tirol.gv.at

i This Cultural Partner offers free admission.

K9 Anton von Nufels piano museum

Anton Wille – organist, pianist, wood artist and farmer – has, over many years, passionately collected and restored old pianos to make them playable again.



6524 Kaunertal, Nufels
T +43/676/638 24 77

i This Cultural Partner is recommended by the Glacier Park, but is not included in the Glacier Park Card – admission by voluntary contribution.

Bonus Partners.

Great value leisure activities.



Horse riding, mountain sports, swimming and much more – discover Tyrol’s “wild” side!

With the Glacier Park Card you enjoy significant discounts from numerous Bonus Partners. From the Alpine rollercoaster to the adventure park “Area 47”, from dressage to indoor climbing. Fun and adventure for all ages, in any weather.



Bonus Partners

Leisure



B1 Alpine Coaster Imst
6460 Imst, Hoch-Imst 19
T +43/5412/663 22-0
alpine-coaster.at
10 % off everything upon presentation of the card

B2 Archaeological Museum Fließ
6521 Fließ, Nr. 89
T +43/5449/200 65
20 % off the admission price upon presentation of the card

B3 AREA 47 Imst-Gurgltal
6430 Ötztal-Bahnhof
Ötztaler Achstr. 1
T +43/5266/876 76, area47.at
10 % discount on bathing lake admission, rafting the "Imster Schlucht" gorge, high rope garden, canyoning tour

B4 H₂O Adventure
6531 Ried, Sportareal 1
T +43/5472/66 99
h2o-adventure.at
10 % off everything upon presentation of the card

B5 Alpin Center Hochzeiger – Pitztal
6474 Jerzens, Liss 207
T +43/5414/869 10
alpin-center.net
10 % off archery and rock climbing courses

B6 Bergführer Kaunertal (mountain guides)
6524 Kaunertal, Vergötschen 48
T +43/5475/275
kaunertal-bergfuehrer.com
10 % off all weekly programmes

B7 Bergführer Büro – Pitztal mountain school
6481 St. Leonhard, Tieflehn 87
T +43/5413/203 03
bergfuehrerbuero-pitztal.at
10 % off everything upon presentation of the card

B8 Imst climbing hall
6460 Imst, Am Raun 25
T +43/5412/62 65 22
kletterhalle.com
10 % off the admission price upon presentation of the card

B10 Wennis swimming pool complex
6473 Wennis, St. Margarethen 637
T +43/5414/872 66
hochzeiger.com
10 % off the admission price upon presentation of the card

B11 Kaunertal Center – indoor pool
6524 Kaunertal, Feichten 134
T +43/5475/222
kaunertalcenter.at
10 % off the admission price upon presentation of the card

B12 Tschirgantbad pool complex, Nassereith
6465 Nassereith, Fernpassstr. 4c
T +43/5265-5333
tschirgantbad.at
10 % off the admission price upon presentation of the card

B15 Haflinger pony trekking & riding – Pitztal stables
6481 Tieflehn 69
St. Leonhard
T +43/5413/863 47
reithof-pitztal.com
10 % off small and large horse riding packages and 2-day trekking tour

B16 Lipizzaner dressage – Tösens
6541 Tösens, Untertösens 1
T +43/650/431 11 90 oder +43/664/260 71 80
10 % discount on Lipizzaner dressage

Horse riding



B13 Biohof Falkeis
6522 Kauns 103, T +43/5472/23 11
biohof-falkeis@aon.at
10 % off all riding lessons

B14 Haflinger pony trekking & riding – Ferienhaus Schmid
6524 Feichten im Kaunertal 101
T +43/5475/334, haflinger-hof.at
10 % discount on cross country hack (only for experienced riders)

Swimming



B9 Imst swimming pool complex
6460 Imst, Schwimmbadweg 20
T +43/5412/665 11, sportzentrum.at
10 % off the admission price upon presentation of the card

Mountain Sports



Altitude zones



The Submontane zone
Meadows and arable land dominate the appearance of the submontane zone today. Just a few remains of deciduous forests still exist, such as the protected linden forests of the Arzler Pitzeklamm gorge or the oak forests on the warm southern slopes of the Inn Valley.

6°

The Montane zone is characterised by a diverse cultural landscape. Flower-filled and steep mountain meadows are closely intertwined with productive coniferous forests. Near the farm you will often still find meadows with tall old fruit trees.

3°

The Subalpine zone is dominated by jagged coniferous forests and “knee timber” such as the green alder or mountain pine. The stone pine, the most resistant of the softwoods, characterises the rough tree line. At the Piller Saddle numerous high and lowland moors also run through the slow-growing mountain forest.

0°

The Alpine zone is the treeless realm of the Alpine pioneer grass. Here, where cows and sheeps graze in the summer, you will usually find several metres of snow in winter. Over time, Alpine roses etc. have developed interesting survival strategies.

-1 to -3°

The Subnival zone is largely free of any vegetation and home to some “extremists” including the glacier buttercup. Their altitudinal distribution ultimately ceases at 3,100m. This is where the “eternal ice” begins.

-3°

The Nival zone. The glaciers of the Ötztal Alps make up the largest single glacial area in the eastern Alps.

-6°

Nival zone
over 3,100 m

Subnival zone
2,800 – 3,100 m

Alpine zone
2,100 – 2,800 m

Subalpine zone
1,600 – 2,100 m

Montane zone
900 – 1,600 m

Submontane zone
up to 900 m

GLETSCHERPARK
IMST · PITZTAL · KAUNERTAL

Average temperature

KEY

-  Family hiking path
-  Mountain hiking path
-  Mountain tour (guide recommended!)
-  Mountain bike route
-  Playground
-  Mountain restaurant/hut
-  Mountain hut (no service)
-  Lookout
-  Cable car
-  Tunnel train
-  Chairlift
-  Chapel
-  Ruins
-  Waterfall
-  Toll gate
-  Cultural Partners
-  Bonus Partners

This map and tips give you just a snippet of what's on offer in our park. Find out more from our park personnel, the tourist board or from your landlord/lady.
 → This map is not a true-to-scale hiking map!



Bonus Partners

Special discounts

- B1 ALPINE COASTER**
10% off everything upon presentation of the card
Imster Bergbahnen, T +43/5412/663 22, alpine-coaster.at

- B2 ARCHAEOLOGICAL MUSEUM FLIESS**
20% off the admission price upon presentation of the card
T +43/5449/200 65

- B3 AREA 47, IMST-GURGLTAL**
10% discount on bathing lake admission, rafting the "Imster Schlucht" gorge, high rope garden, canyoning tour, T +43/5266/876 76, area47.at

- B4 H₂O ADVENTURE**
10% off everything upon presentation of the card
T +43/5472/66 99, h2o-adventure.at

- B5 ALPIN CENTER HOCHZEIGER – PITZTAL**
10% off archery and rock climbing courses
T +43/5414/869 10, alpin-center.net

- B6 BERGFÜHRER KAUNERTAL (MOUNTAIN GUIDES)**
10% off all weekly programmes
T +43/5475/275, kaunertal-bergfuehrer.com

- B7 BERGFÜHRERBÜRO PITZTAL – MOUNTAIN SCHOOL**
10% off everything upon presentation of the card
T +43/5413/203 03, bergfuehrerbuero-pitztal.at

- B8 IMST CLIMBING HALL**
10% off the admission price upon presentation of the card
T +43/5412/62 65 22, kletterhalle.com

- B9 IMST SWIMMING POOL COMPLEX**
10% off the admission price upon presentation of the card
T +43/5412/665 11, sportzentrum.at

- B10 WENNS SWIMMING POOL COMPLEX**
10% off the admission price upon presentation of the card
T +43/5414/872 66, hochzeiger.com

- B11 KAUNERTAL CENTER – INDOOR POOL**
10% off the admission price upon presentation of the card
T +43/5475/222, kaunertalcenter.at

- B12 TSCHIRGANTBAD POOL COMPLEX, NASSEREITH**
10% off the admission price upon presentation of the card
T +43/5265/53 33, tschirgantbad.at

- B13 BIOHOF FALKEIS – FAMILY FALKEIS**
10% off all riding lessons, T +43/5472/23 11, biohof-falkeis@aon.at

- B14 HAFLINGER PONY TREKKING & RIDING – FERIENHAUS SCHMID**
10% discount on cross country hack (only for experienced riders)
T +43/5475/334, haflinger-hof.at

- B15 HAFLINGER PONY TREKKING & RIDING – PITZTAL STABLES**
10% off small and large horse riding packages and 2-day trekking tour
Fam. Gisela u. Alfred Eiter, T +43/5413/863 47, reithof-pitztal.com

- B16 LIPIZZANER DRESSAGE – TÖSENS**
10% discount on Lipizzaner dressage, Family Sturm
T +43/650/431 11 90 oder +43/664/260 71 80

Lifts

- 1 PITZTALER GLETSCHERBAHNEN**
6481 St. Leonhard, Mittelberg
T +43/5413/862 88, pitztal@tirolgletscher.com

- 2 RIFFLSEEBAHN**

- 3 KAUNERTALER GLETSCHERBAHNEN**
- 4 KAUNERTALER GLETSCHERSTRASSE**
- 5 BERGBAHNEN FENDELS**
6524 Feichten im Kaunertal, Feichten 141
T +43/5475/55 66, kaunertal@tirolgletscher.com

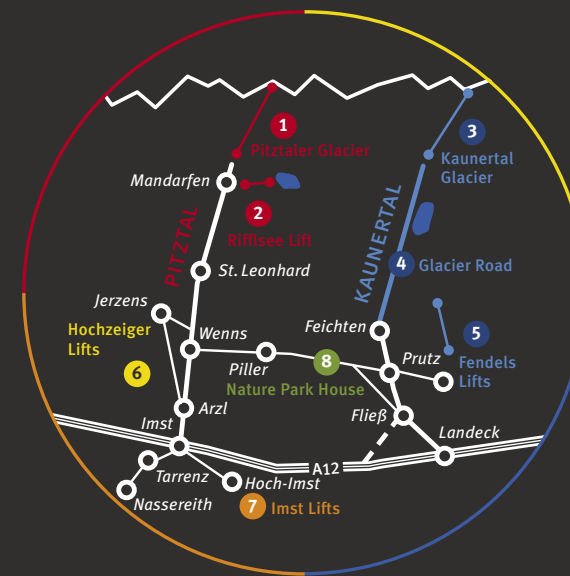
- 6 HOCHZEIGER BERGBAHNEN**
6474 Jerzens, Liss 270, T +43/5414/870 00
info@hochzeiger.com

- 7 IMSTER BERGBAHNEN**
6460 Imst, Hoch-Imst 19
T +43/5412/663 22
info@alpine-coaster.at

- 8 NATURPARKHAUS KAUNERGRAT**
6521 Fließ, Gachenblick 100
T +43/5449/63 04, naturpark@kaunergrat.at

Glacier Park

Pitztal, Kaunertal, Imst and Hochzeiger



Cultural Partners

The cultural experience –
free admission with the Glacier Park Card

- K1 HAUS DER FASNACHT (CARNIVAL MUSEUM)**

- K2 KNAPPENWELT GURGLTAL (MINING VILLAGE)**

- K3 MUSEUM IM BALLHAUS**

- K4 NATURE PARK HOUSE MUSEUM**

- K5 SERFAUSER LAUSER – OLD MILL**

- K6 STARKENBERGER BIERMYTHOS (BEER EXPERIENCE)**

- K7 FASNACHTHAUS (CARNIVAL HOUSE) NASSEREITH**

The following Cultural Partners offer free entry and are warmly recommended by the Glacier Park:

- K8 ANTON VON NUFELS "FLÜGEL" MUSEUM (PIANO EXHIBITION AND CONCERTS)**

- K9 JERZENS PINE EXHIBITION**

Location

At the corner of three countries,
in South West Tyrol

